



PixEdit[®]

PixEdit Desktop – PixEdit Server integration manual

V: 1.1

Table of contents

.....	1
PixEdit Desktop – PixEdit Server integration manual	3
PixEdit Desktop	3
ScanBar	5
Log on:	5
Profile:	5
Status view:.....	5
Review scanned document before processing:	5
Process:	5
Submit to Archive:.....	5
PixEdit Server	6
How to use.....	6
Preparation before scanning:	6
Scanning:	6
After scanning and processing:.....	6

PixEdit Desktop – PixEdit Server integration manual

This manual is for PixEdit Desktop and PixEdit Servers integration and the functions related to it. Go to www.pixedit.com for specific manuals about PixEdit Desktop and PixEdit Server.

For the integration to work you will need a valid license of PixEdit Desktop and PixEdit Server.

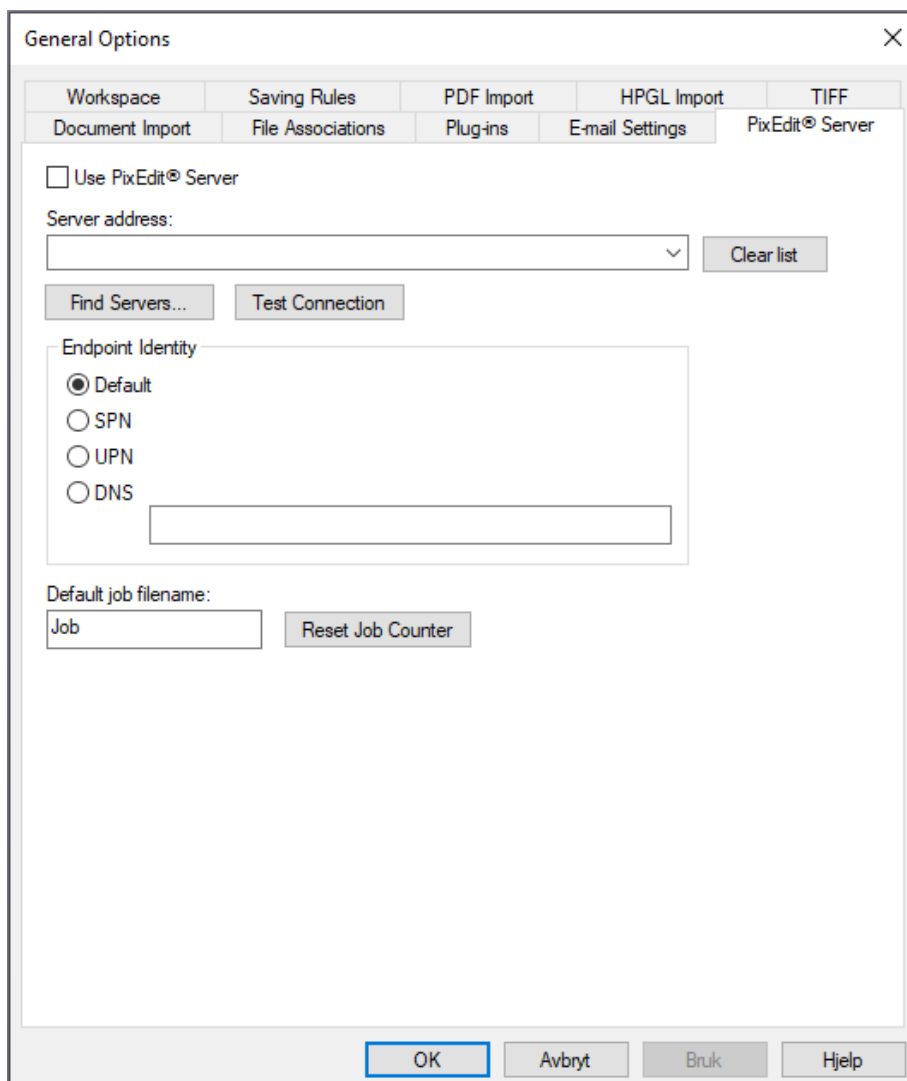
If you need help further than this manual can provide contact support@pixedit.com.

Install PixEdit Desktop and PixEdit Server normally. PixEdit Desktop on a desktop computer and PixEdit Server on a server.

PixEdit Desktop

First, we need to connect the two programs. Use PixEdit Desktop to find PixEdit Server.

From PixEdit Desktop's menu go to **Tools -> Options** and select the **PixEdit Server** tab.



The screenshot shows the 'General Options' dialog box with the 'PixEdit Server' tab selected. The dialog has a title bar with a close button (X) and a menu bar with the following options: Workspace, Saving Rules, PDF Import, HPGL Import, TIFF, Document Import, File Associations, Plug-ins, E-mail Settings, and PixEdit Server. The main content area includes:

- Use PixEdit Server
- Server address: [Dropdown menu] [Clear list]
- [Find Servers...] [Test Connection]
- Endpoint Identity:
 - Default
 - SPN
 - UPN
 - DNS
- Default job filename: [Job] [Reset Job Counter]

At the bottom, there are four buttons: OK, Avbryt, Bruk, and Hjelp.

In this dialog tick the **Use PixEdit Server** check box.

In the **Server address** field, you can use the **Find Servers...** button and find your PixEdit Server.

You may not find your PixEdit Server for several reasons. But you can manually type in the address to the service, like this:

Syntax: net.tcp:// (Server name): (port) / (Service)

A live sample may look something like this: net.tcp://2112-r2-serv-ess:8080/PixEditWebService

Endpoint Identity specifies the type and the name of the endpoint used to identify the server. This must correspond to your endpoint settings in the .exe.config file. For more information about configuring endpoints in a PixEdit Desktop - PixEdit Server integration, please contact PixEdit Support. Select **UPN**.

Default job filename is a name the file/job gets from PixEdit Desktop when it's submitted to PixEdit Server for processing. You may select your default job name and reset the job incrementation counter.

By pressing **OK** you have now connected the two PixEdit applications.

ScanBar

When PixEdit Desktop is properly connected to PixEdit Server, the lower section of the ScanBar window will change its appearance.

You will now see a **Log on** button, a profile list and a status window list

Log on: Here you need to log on with a PixEdit Server User. Default user from PixEdit Server is **admin – admin**.

Profile: Here you can select profiles that are added to the current PixEdit Server user.

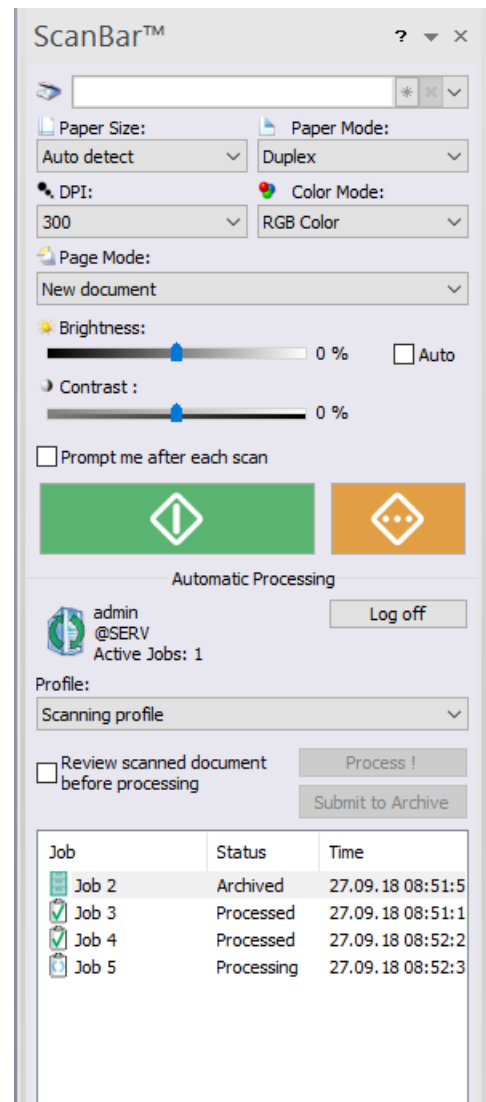
Status view: Displays a list of documents that are being processed in PixEdit Server with a status. From this list you will be able to open finished documents for verification and submit them to the **Archive**.

Review scanned document before processing: If this setting is checked, you will be presented the scanned document in PixEdit Desktop before its submitted for processing in PixEdit Server for.

Process: This button will submit the opened document for PixEdit Server processing.

Submit to Archive: This button will submit the selected document(s) in the **Status list** to the configured archive path.

The upper section of **ScanBar** will be the same as before with scanning settings.



PixEdit Server

The only thing you need to do on the PixEdit Server side is to create your job profiles. This manual is not going to cover that, but if you need further instructions on the topic please see the PixEdit Servers user manual. One important thing you need in your job profile is the **Save to Archive (PixEdit Desktop integration)**. This command is the saving command you'll need for the integration to work properly. In the properties of this command you will find **Archive savepath**. Here you need to type in the proper save path to where the documents will be saved when the user presses the **Archive** button in PixEdit Desktop.

How to use

Preparation before scanning:

After the connection is completed and you have logged in with a user that have job profiles you may select a profile and scan documents

Scanning:

With the integration you don't need to setup any profiles in PixEdit Desktop. The only thing you need to do is scan normally.

If you are not familiar with PixEdit Desktop for scanning all you need to do is select your preferences and press the big green button.

After scanning and processing:

When the document processing is done the status on this job will change. You can then just double click job item to open it for quality verification. When the quality check is done just right-click and select **Archive** to send the document to the selected archive path. Or mark the document(s) and press the button **Submit to Archive**.